



@beecholme



@BeecholmeSchool

Head of School Update

Dear Parents/Carers,

Welcome back to the final term of the year. I am a little baffled when writing this as I can't quite believe where the time has gone. Historically, this term is known as the busiest for schools, and this is no exception for Beecholme. We have a busy, fun and very important term, including SAT's for year 6, the multiplication check for year 4, the phonics screening check for year 1, PGL residential, Kip in a ship - the children are off to sleep on the HMS Belfast and they've even asked Mr Noel to go and plenty more. Look out for all the wonderful photos and updates we will be sharing on our social media pages. Please give us a follow.

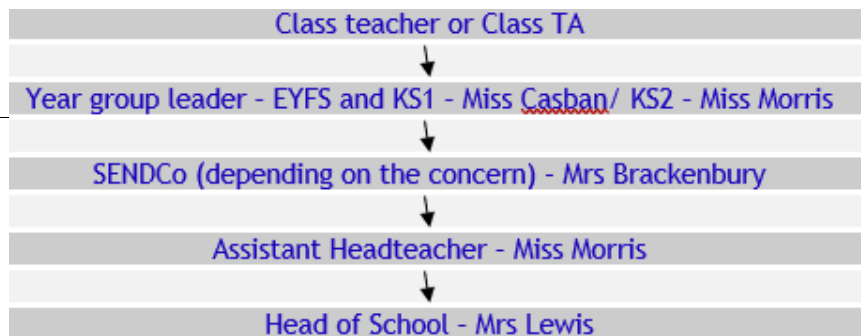


At the beginning of this term, I invited our 'Friends of Beecholme' into school to discuss innovative ways we can fundraise to continue to make Beecholme a wonderful place for our children. Unfortunately, the turnout was not as I had hoped, and the meeting did not go ahead. Therefore, I would like to propose a new date of **Wednesday 15th May** and this invite is going out to all parents to raise awareness of our 'Friends of Beecholme' group. This meeting with primarily focus on the summer fair and ensuring we have enough pairs of hands to run one this year. I look forward to seeing as many of you there to support the school. The meeting will start straight after school at 3.15pm. Please come to the school office.

This week Beecholme has had a real buzz of learning as we have taken part in our very own STEM week. STEM week has been based around the innovative ways of learning Science, Technology, Engineering and Maths. The children have had a wonderful time taking part in Artificial intelligence and coding workshops, creating robotic hands, coding their own programme and lots more! We will be sharing pictures and updates in the next newsletter and on our social media. Thank you to Miss Doyley for planning such a wonderful week for our children.

Can I take this opportunity to remind parents about the systems of communication we have in place at Beecholme to ensure it is most effective. Parents and staff alike should always communicate in a respectful and calm manner. If there are parental concerns, these should be shared with staff in an appropriate forum and at an appropriate time. If concerns are regarding SEND or family concerns, the DSL/SENCO would be the most appropriate to be contacted. If the concern is regarding ParentPay/Parent Mail, forms or clubs, the school office should be the first point of contact. Please note we will try and make ourselves as available as we can, but on occasion (staff dependant) you may need to arrange a different time to meet.

To ensure that parents are communicating with the correct person to support them, they should follow the lines of communication below. If initial communication is with someone further down the chain of communication, there may be a delay in offering support or a resolution, as it would be referred to the class staff who will be able to deal with the concerns more effectively. Please ensure that you speak to the adults working in your child's class as a first point of resolution. Any concerns that need to be escalated further along the communication line will do in collaboration with parents and staff.



Have a wonderful weekend everyone.

Hayley Lewis

Curriculum Update

What an exciting week it has been at Beecholme, celebrating STEM Week across the school. Following on from this, our pupils will be beginning their new Science units next week. This includes:

Year 1 – Materials

Year 2 - Animals including humans

Year 3 - Rocks

Year 4 – The digestive system

Year 5 – Materials and their properties

Year 6 – Evolution and inheritance

After this, we will begin our final history units of the year, learning about everything from the dinosaurs and the Vikings to the Tudors World War 2. Don't forget to join us at our very own museum evening on 23rd May to find out more about what we have been learning.



Open Days



There are no current open days planned, however if you would like to visit the school, or have any friends or families who are considering Beecholme then please do call the school office to arrange. 0208 640 4795.

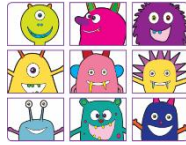
Importance of Early Reading and Beecholme's Expectations

Early reading is important for every child to have access to. By reading with your child and teaching children the skills to be able to read will increase their will to read. We encourage you read with your child daily and choose books that you can enjoy together. Also, listen to your child practise reading their phonics book to develop their fluency. Reading develops children's vocabulary, understanding of the world and empathy. A love of reading is the biggest indicator of future academic success!



Parent Workshop - Phonics Screening Check

On Thursday 9th May at 9.00am and 3.15pm we will be holding a meeting to provide you with information about the upcoming Phonics Screening Check.



SEND

Learning Through Play

Numbers

Numbers can provide a lot of entertainment for small children. They first become aware of the sounds of numbers, then they begin to understand what they mean. Finally they need to recognise them when they are written down.

There are four main skills that children need to develop before they can count. Follow the links to see these explained and how you can help.

1. Recognition of the [sounds](#) of the numbers.
2. The understanding of [one-to-one correspondence](#).
3. The understanding of "[How many are there?](#)"
4. The number of objects [is the same](#) however they are arranged.

The next stage is for your child to recognise numbers as symbols which can taught by playing [number recognition games](#).

Once children recognise numbers, they will want to start writing them themselves. To help encourage them to form their numbers correctly, use this [number formation guide](#).

Attendance at Beecholme



At Beecholme we strive for the best education for all the children and to ensure this is happening, we need to ensure the children are in school EVERYDAY - unless there are situations like being unwell meaning they can't come to school.

I am sure you have all identified the current drive for attendance, including our whole school attendance letter and attendance letters for those dropping below 96% which is our whole school target. We will continue to do this and to monitor the children's attendance to ensure we are in line with or above national averages. If you have any questions or concerns about your child's attendance, then please do speak to someone at school about it.

Please support us, to support YOUR children in having the education they deserve.

To promote attendance, I will be sharing the attendance figures with you each week. We will share the attendance figures for each class and share which class have won our Beecholme Bears - Bobby and Polly, and in addition which children will receive extra playtime for their good attendance in school. If you could share this with your children, as we do in assembly time, to promote each classes attendance this will be most helpful.

Week beginning 22/04/24 - 25/04/24

Nursery - 95%

Reception - 90%

Year 1 - 92%

Year 2 - 93%

Year 3 - 95%

Year 4 - 97%

Year 5 - 97%

Year 6 - 95%



And the winners with the best attendance this week: Year 4 AND Year 5 with 97% WOW. Well done!



Important Dates for the new term



Monday 29 th April - Wednesday 1 st May	Year 4 PGL Trip
Thursday 2 nd May	Polling Day - School closed
Monday 6 th May	Bank Holiday
Monday 13 th - Friday 17 th May	Year 6 SATS week
Thursday 16 th - Friday 17 th May	Year 5 Kip on a Ship
Thursday 23 rd May	Beecholme 'History Museum'
Friday 24 th May	Beecholme family picnic
Monday 27 th - Friday 31 st May	Half Term
Monday 3 rd June	INSET Day (School closed)
Tuesday 4 th June	First day back for pupils